

# Commander SK

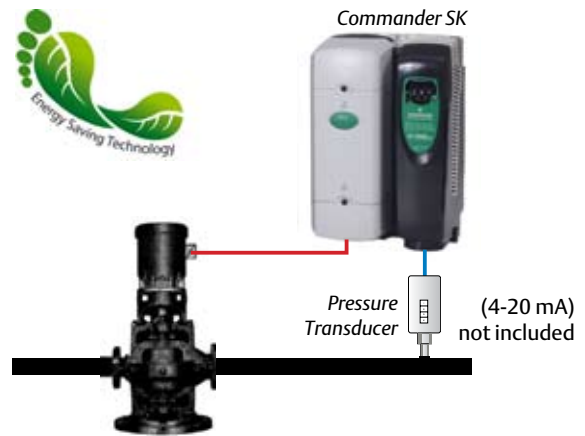


Save energy and control constant pressure with the Commander SK drive that is dedicated to pumping applications. The Commander SK Pump Drive is rich with features that are a perfect match for simplex (single pump) system needs.

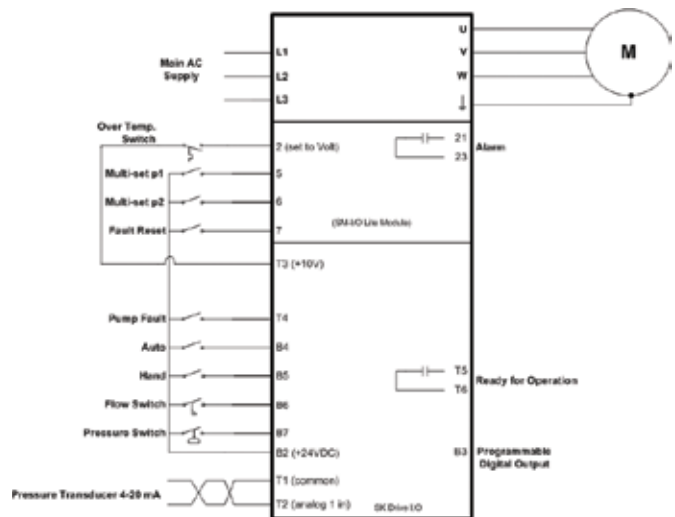
The SK Pump Drive is shipped pre-programmed and ready for quick and easy installation. Simply enter the motor parameters, desired control mode, and diagnostic settings and you're up and running! This can be done without a computer through the built-in keypad, or using your PC and our free CTSOft commissioning software.

Save Energy, Time, and Cost With These Features:

- **Constant Pressure PID**
- **Auto / Hand Modes**
- **No Flow Detection**
- **Dry Well Detection**
- **Transducer Loss Detection**
- **Sleep / Wake**
- **Pipe Fill Start Mode**
- **Keypad and Terminal Control**
- **Automatic Fault Reset**
- **Multiple Pressure Set-points**
- **Use Pressure Transducer and/or Pressure Switch**



Typical Wiring Diagram:



**NOTE:**

- Pressure Switch Input B7 Only active in Pump Mode 1 (Pr.18.12 = 1)
- Flow Switch Input B6 Only active in Pump Modes 1 or 2 (Pr.18.12 = 1 or 2)
- All outputs are programmable to indicate any alarm, trip or status.

### Simple Ordering

Adding the suffix **-P** to any SK drive specifies it as a pump drive. Using a **-PL** suffix with any SK drive frame size B or larger, adds an SM-I/O Lite module that allows:

1. Multiple pressure set-point selection via digital inputs
2. An external reset digital input
3. Over temperature digital input
4. One additional programmable relay output

### Example Order Codes:

SKCD200220-P, SK2201-P Pumping drive w/o SM-I/O Lite  
 SKCD200220-PL, SK2201-PL Pumping drive with SM-I/O Lite

In either case, the drive will be shipped with a pumping specific parameter set, a pre-programmed LogicStick, and a manual.

For anyone wishing to convert an existing SK drive to a Pump version, the pre-programmed LogicStick and the SmartStick are available as a separate items. Order Codes are **LOGICSTICK-PUMP & SMARTSTICK-P**.